

RECEIVED

OCT 3 2012

CASS COUNTY COMMISSION



Consulting Engineering
Land Surveying

October 2, 2012

Robyn Sorum, District #5 Chairperson
Cass County Commission
PO Box 2806
Fargo, ND 58108-2806

RE: Water and Sewer Improvement District #2012-1
Tower City, North Dakota

Dear Mrs. Sorum:

Enclosed please find several maps of the proposed water and sewer improvements in the Tower City, ND. The proposed project includes relining sanitary sewer main and repairing the existing corporations, curb stops and water service lines within the City as well as replacing the water meters. As part of the funding requirement with the ND Rural Development (USDA) office, the proposed project needs evidence of consistency with plans from the Cass County Commission.

The proposed project needs to be reviewed by the Cass County Commissioners and evidenced in writing that the project will not be inconsistent with the comprehensive development plan for the area. Enclosed is a sample letter that can be used following your review and put on your letter head.

If you have any questions, please contact our office at (701) 282-4692.

Sincerely,

Moore Engineering, Inc.

A handwritten signature in blue ink that reads 'Cavin P. Berube'.

Cavin P. Berube, EIT
Project Engineer

SUGGESTED MOTION:

Move to authorize the chairman to sign a letter of concurrence as part of a rural development funding application for water and sewer improvements in the City of Tower City.

925 10th Avenue East
West Fargo, ND 58078

T: 701.282.4692
F: 701.282.4530

www.mooreengineeringinc.com

October 15, 2012

Scott Salberg, Mayor
City of Tower City
P.O. Box 55
Tower City ND 58071-0055

**RE: Water and Sewer Improvement District No. 2012-1
Tower City, North Dakota**

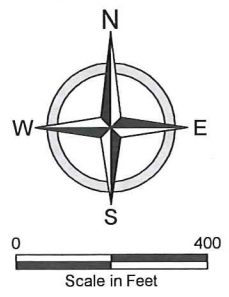
Dear Mayor Salberg:

After reviewing your proposed water and sewer improvements in the City of Tower City, the Cass County Commission has found that said improvements do not conflict with any county comprehensive development plan for the area.

Sincerely,

Scott Wagner, Chairman
Cass County Commission

cc: Cavin Berube, Moore Engineering, Inc.

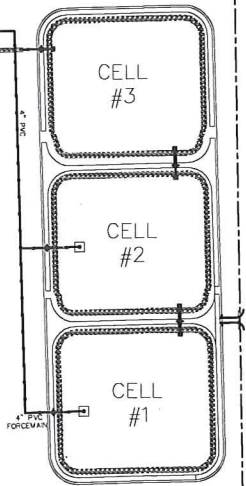


PRELIMINARY

moore
engineering, inc.
Consulting Engineering • Land Surveying
West Fargo, ND • Fergus Falls, MN • Minot, ND
www.mooreengineeringinc.com

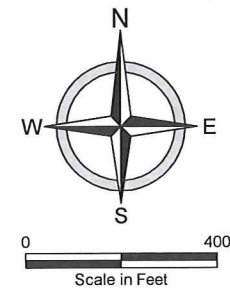
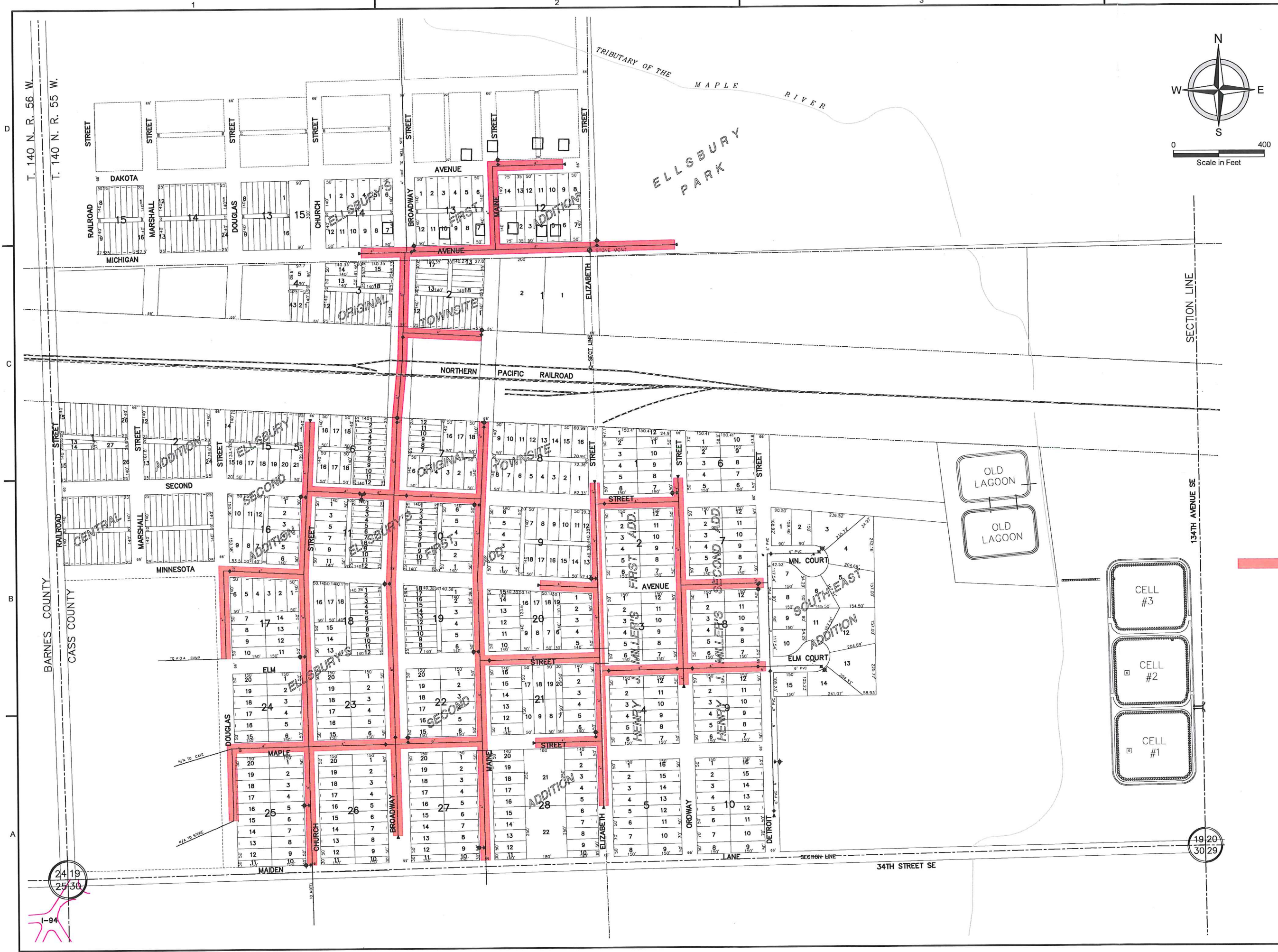
SANITARY SEWER RELINING MAP - ALTERNATIVE B
SEWER & WATER REPLACEMENT
CITY OF TOWER CITY
CASS COUNTY, NORTH DAKOTA
SANITARY SEWER RELINING MAP

LEGEND
PROPOSED SANITARY SEWER RELINING



DATE:	06/18/12
REVISED:	---
REVISED:	---
REVISED:	---
RECORD:	---
PROJECT No.	16246
DRAWN BY:	MPL
CHECKED BY:	CPB
PROJ. MANAGER:	KJM
PROJ. ENGINEER:	MDW

C-203
SHEET 3 OF 5

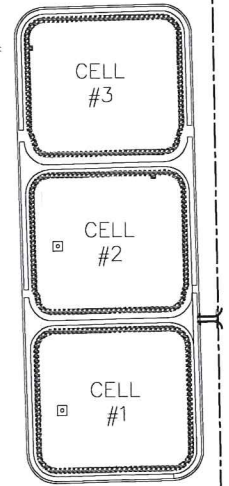


PRELIMINARY



WATER MAIN REPLACEMENT MAP - ALTERNATIVE B
 SEWER & WATER REPLACEMENT
 CITY OF TOWER CITY
 CASS COUNTY, NORTH DAKOTA
 WATER MAIN REPLACEMENT MAP

LEGEND
 PROPOSED GATE VALVE
 CORPORATION & CURB
 STOP REPLACEMENT



DATE:	06/18/12
REVISED:	—
REVISED:	—
REVISED:	—
RECORD:	—
PROJECT No.	16246
DRAWN BY:	MPL
CHECKED BY:	CPB
PROJ. MANAGER:	KJM
PROJ. ENGINEER:	MDW

C-204
 SHEET 4 OF 5