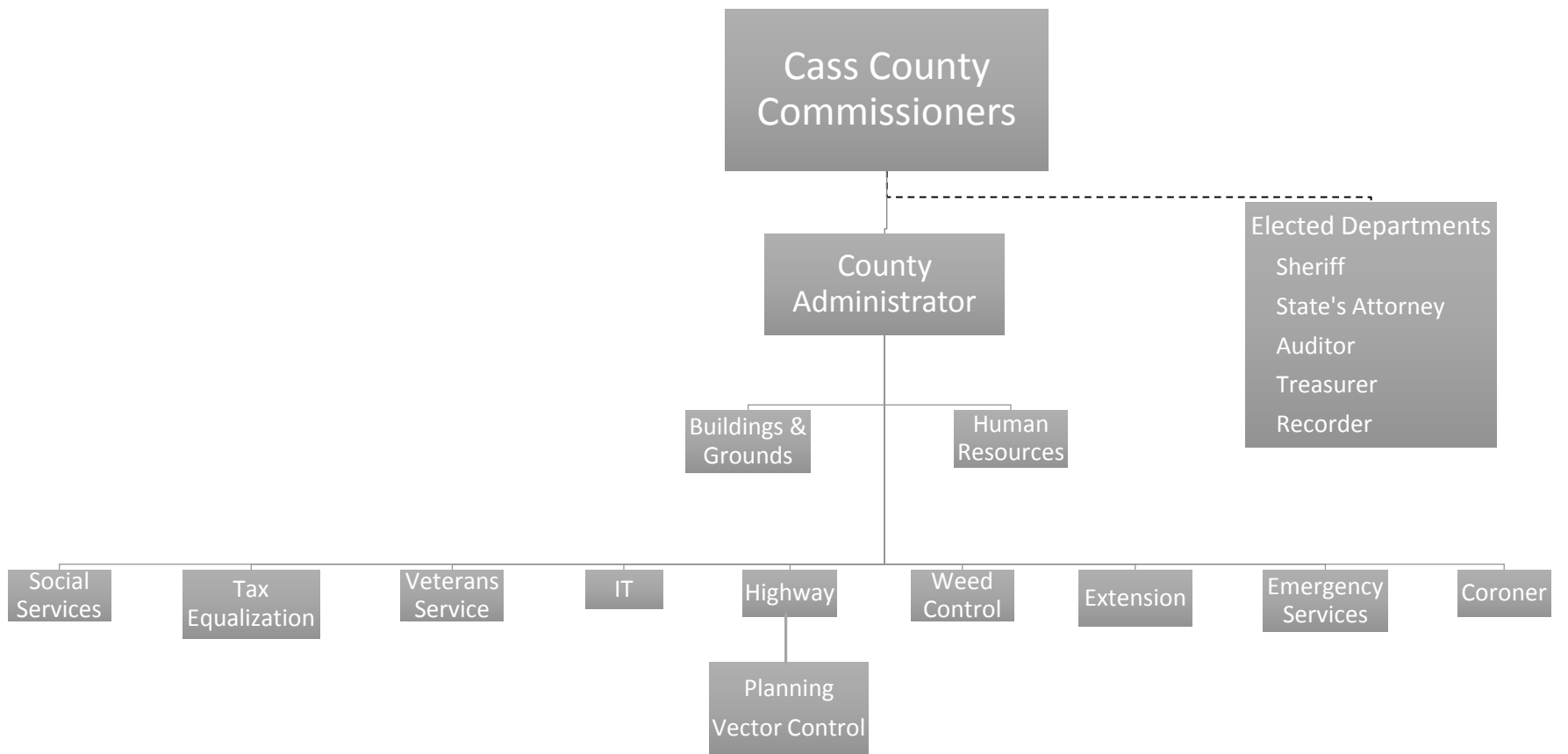


CASS COUNTY ORGANIZATIONAL STRUCTURE

(Scherling)

SUGGESTED MOTION:

Move to approve the organizational structure for Cass County as presented.



CASS COUNTY OFFICES

COMMISSIONERS & COMMISSION ASSISTANT

APPOINTED OFFICES:

ADMINISTRATOR - HR - BUILDINGS & GROUNDS

CORONER

EMERGENCY SERVICES

EXTENSION SERVICES

ENGINEER - PLANNING - VECTOR CONTROL

INFORMATION TECHNOLOGY – GIS

SOCIAL SERVICES

TAX DIRECTOR

VETERAN'S SERVICES

WEED CONTROL

ELECTED OFFICES:

AUDITOR

RECORDER

SHERIFF - JAIL - JUVENILE DETENTION - PATROL

STATE'S ATTORNEY

TREASURER