



**Road Advisory Meeting
November 21, 2016**

Cass County Highway Department



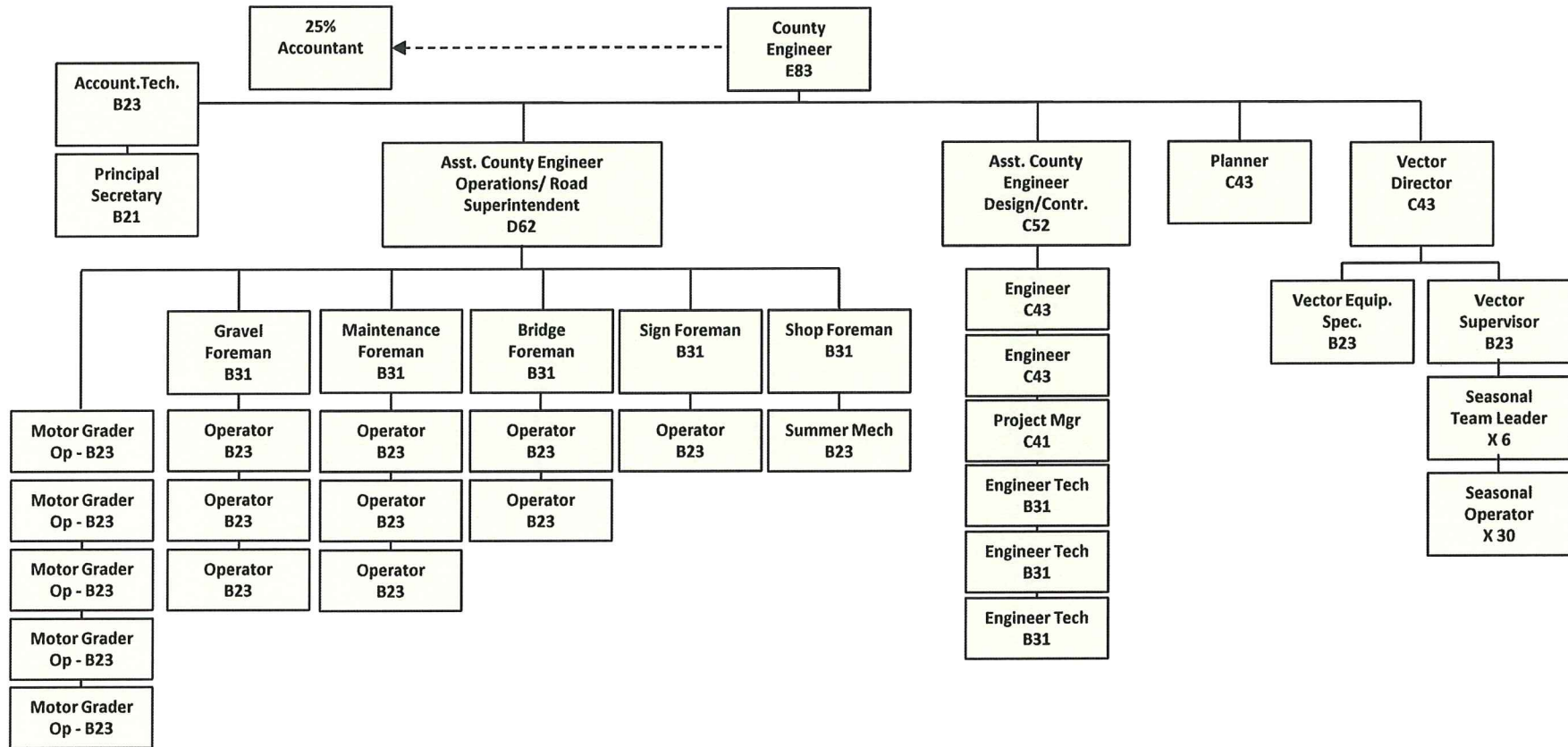
Road Advisory Meeting

**Highway Department
Organizational Change**

Cass County Highway Department

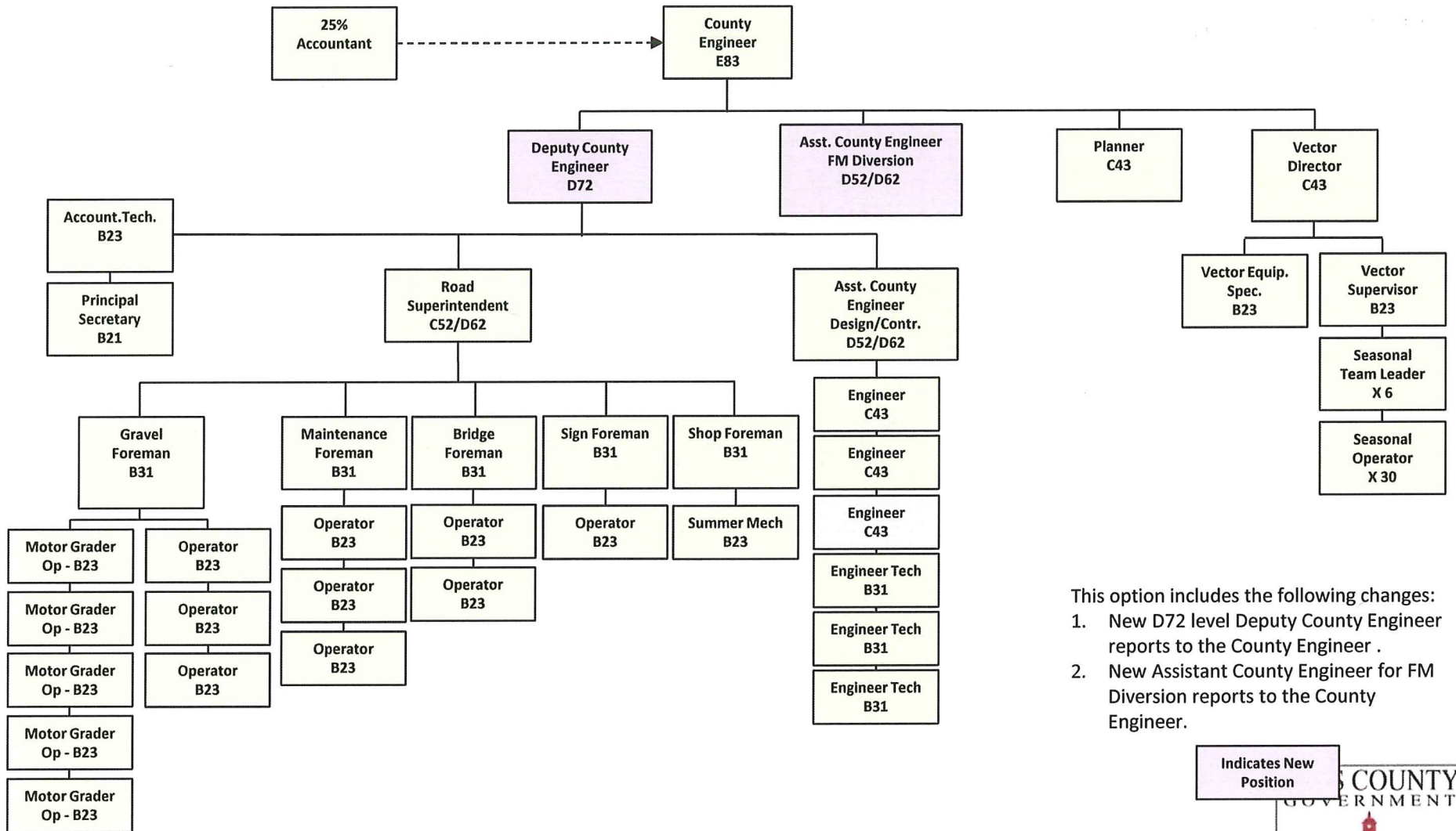
Cass County Highway Department Organizational Chart

Current as of November 2016



Cass County Highway Department Organizational Chart

Proposed



- This option includes the following changes:
1. New D72 level Deputy County Engineer reports to the County Engineer .
 2. New Assistant County Engineer for FM Diversion reports to the County Engineer.





Road Advisory Meeting

65 MPH Speed Limit

Cass County Highway Department

Speed Limits

- 2005 ND Legislature changed the ND Century Code to authorize Counties to post two lane highways at 65 MPH.
- Counties across ND have taken different approaches.
 - Many Counties left the speed limit at 55
 - Some changed only a few roads to 65
 - Some increased all of their paved highways to 65 MPH.
- We must look at many areas when considering this:
 - Highway Safety
 - Enforcement
 - Other concerns

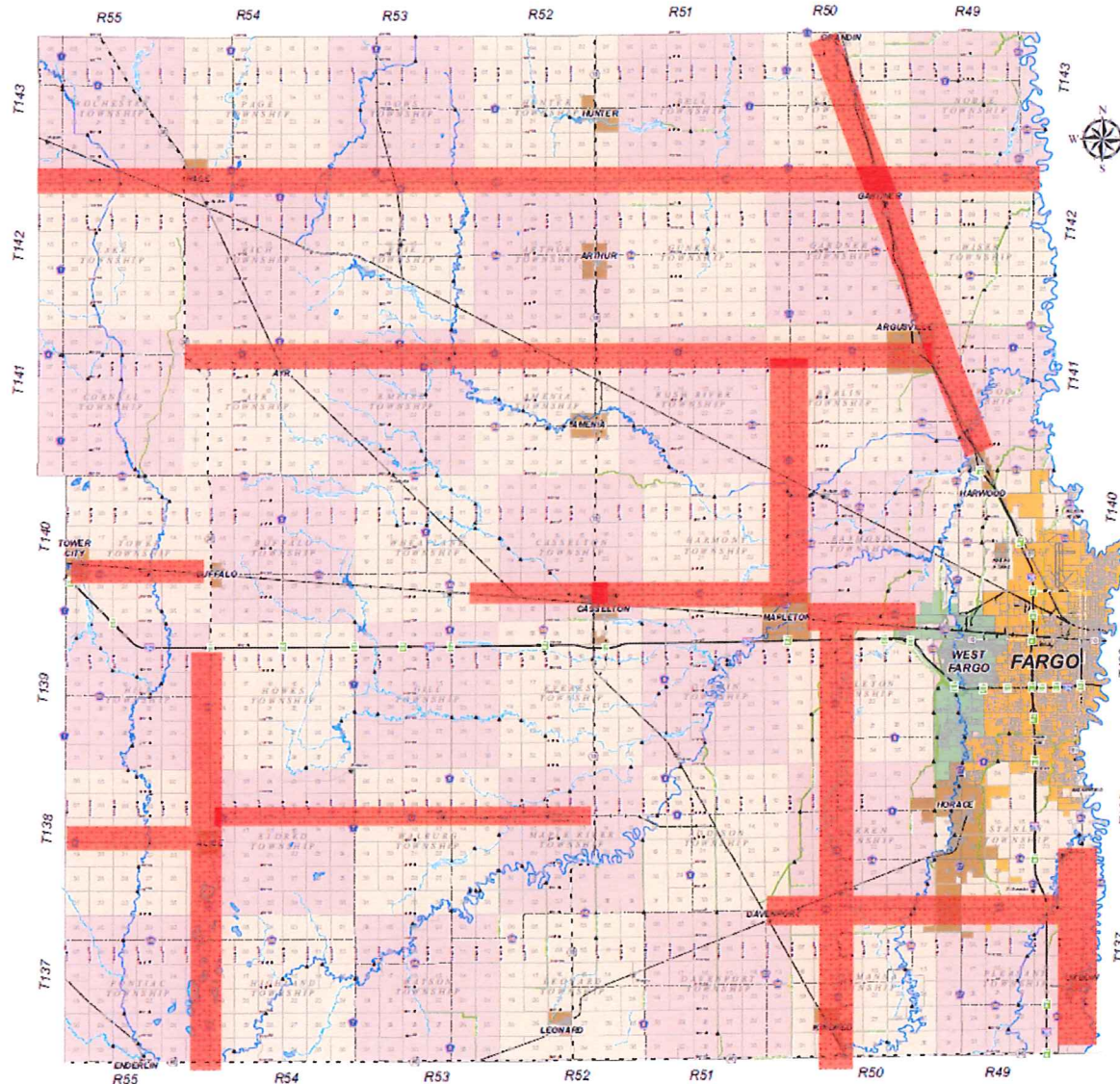


65 MPH Speed Limits

- All Cass County Highways are posted at 55 MPH
- Changes to 65 MPH require the following:
 - Meet 65 MPH design standards (horizontal & vertical curves)
 - Road surface conditions, shoulders, 4:1 or flatter slopes, and sight distance
 - Clear zone, intersections, and roadside hazards
 - Crash history
- Recommend:
 - Looking at roads based on the criteria above.
 - If it is decided to go to 65 MPH, make the change on all highways that meet the requirements and not just select roads.



Roads that may meet 65 MPH criteria





Road Advisory Meeting

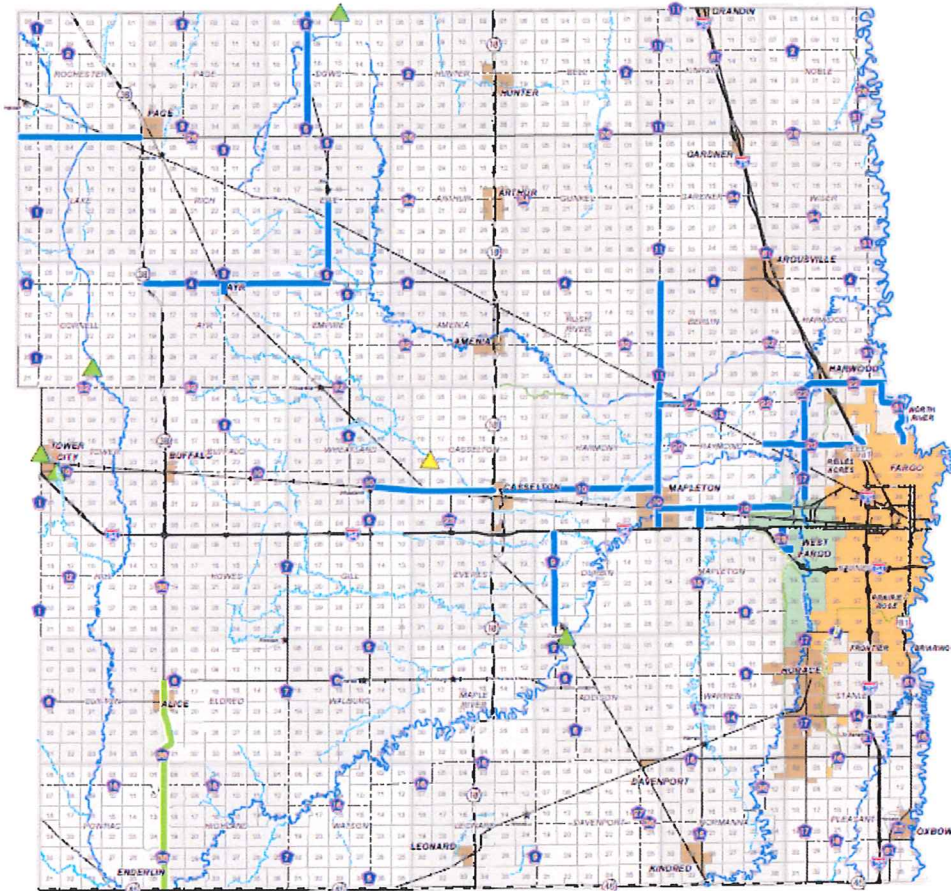
2017 Projects

Cass County Highway Department

Cass County Highway Department

Planned 2017 Construction Projects

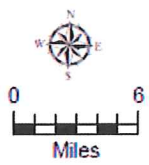
Pending Funding



Jason Benson
County Engineer, P.E.
Richard Sieg
Highway Superintendent
Prepared by
Cass County Highway Dept.
Updated: 11/16/2016



Cass County Hwy. Dept.
1201 Main Ave. W.
West Fargo, ND 58078
(701) 298-2370
Web: <http://www.casscountynad.gov>
Email: highway@casscountynad.gov

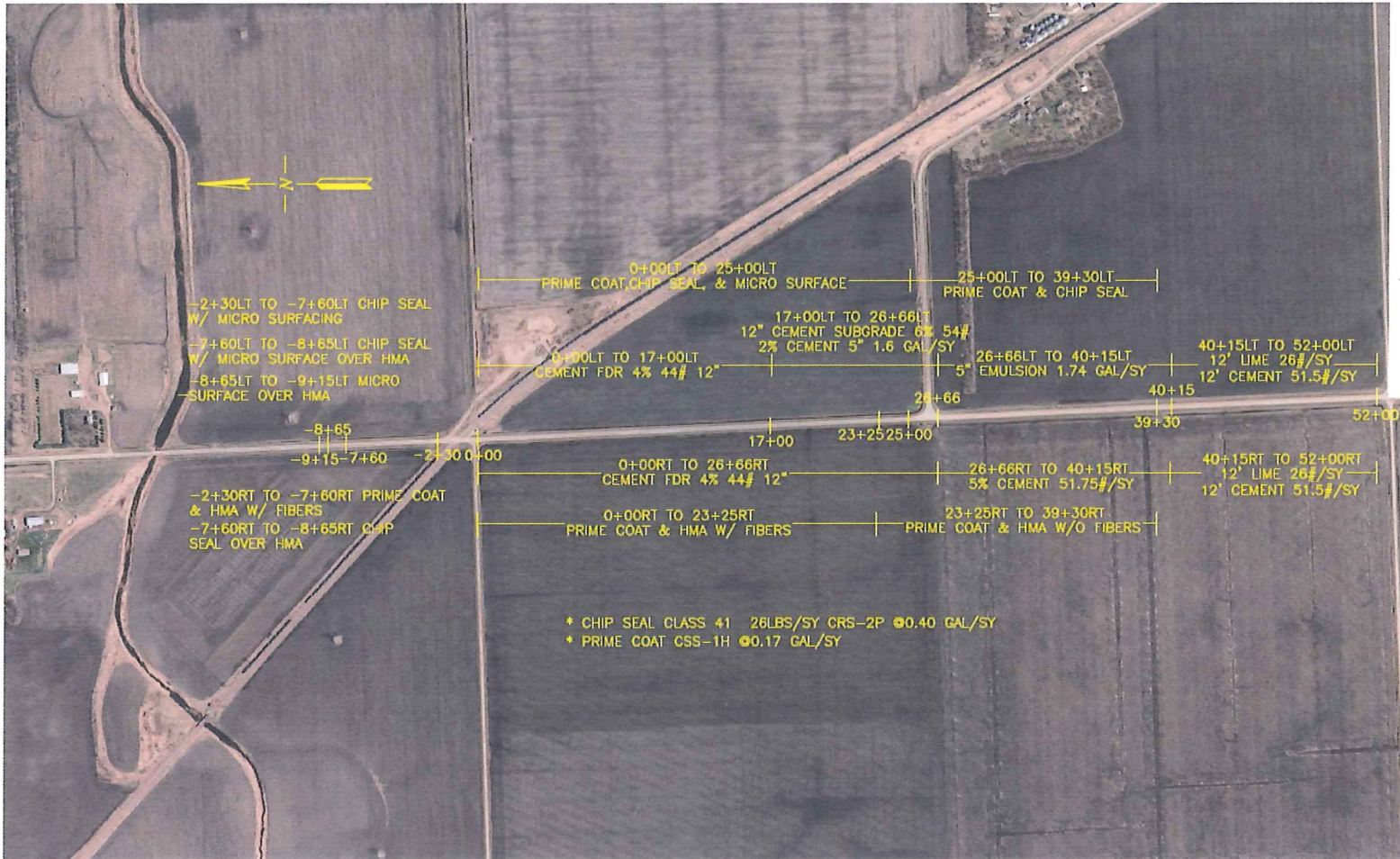


- Projects**
- Bituminous Overlay
 - Chip Seal
 - Grading & Bituminous Surfacing
 - Shared Use Path/Bituminous Overlay
 - Sub-Grade Repair
 - ▲ Structure Replacement
 - ▲ Structure Repair

Disclaimer: As with all public information derived from satellite sources, this data may contain errors or faults. Therefore, Cass County does not provide any warranty, express or implied, as to the accuracy of this data. The recipient is encouraged to make an independent investigation of verification of the data. If an error is found, it is requested the County Engineer be advised of the particular so the data can be warranted and corrected. THIS MAP IS NOT A SUBSTITUTE FOR AN ACCURATE FIELD SURVEY.



C9 – Durbin - Demo



Questions?

