




County  
Administrator

Keith Berndt

**M E M O**

TO: Cass County Commissioners

FROM: Keith Berndt 

DATE: November 21, 2013

SUBJECT: Right-of-way acquisition – County Highway 16

---

It was recently brought to my attention that two parcels of property near the intersection of Cass Highway 16 and Interstate 29 will be auctioned on December 10, 2013. It may be in the County's best interest to consider purchasing these parcels at this time for future right-of-way purposes. The enclosed map illustrates the location.

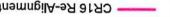


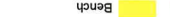

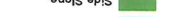
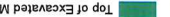
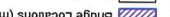
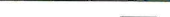


I will be prepared to discuss more information during the meeting.

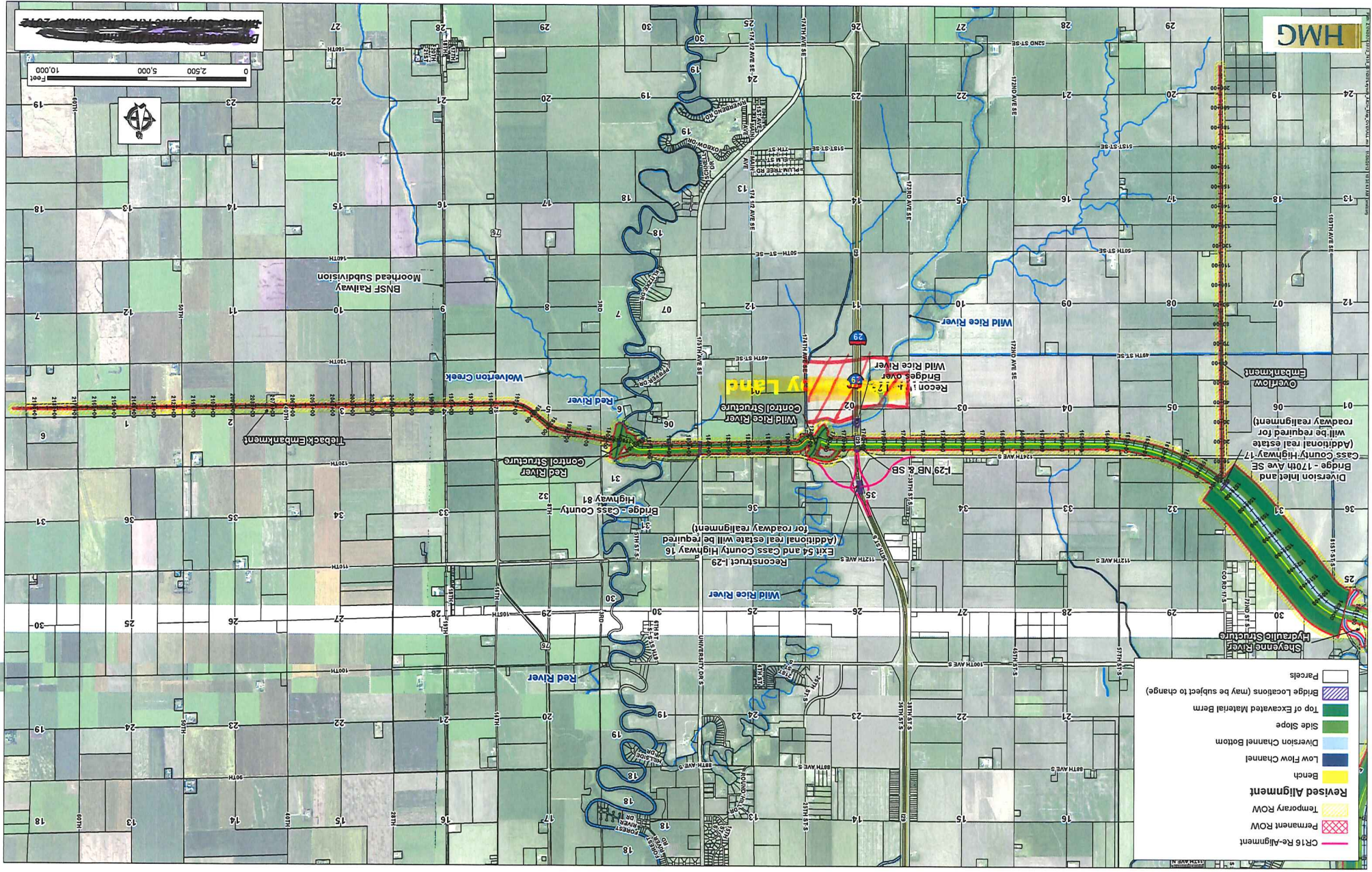
Dependent on the board's preference, I would suggest either to authorize the property purchase if you choose, or to take no action if you decide not to pursue the matter.

WORDENHMY DOCUMENTS\KEITH\RIGHT OF WAY ACQUISITION MEMO 11-21-2013.DOCX

Box 2806  
211 Ninth Street South  
Fargo, North Dakota 58108


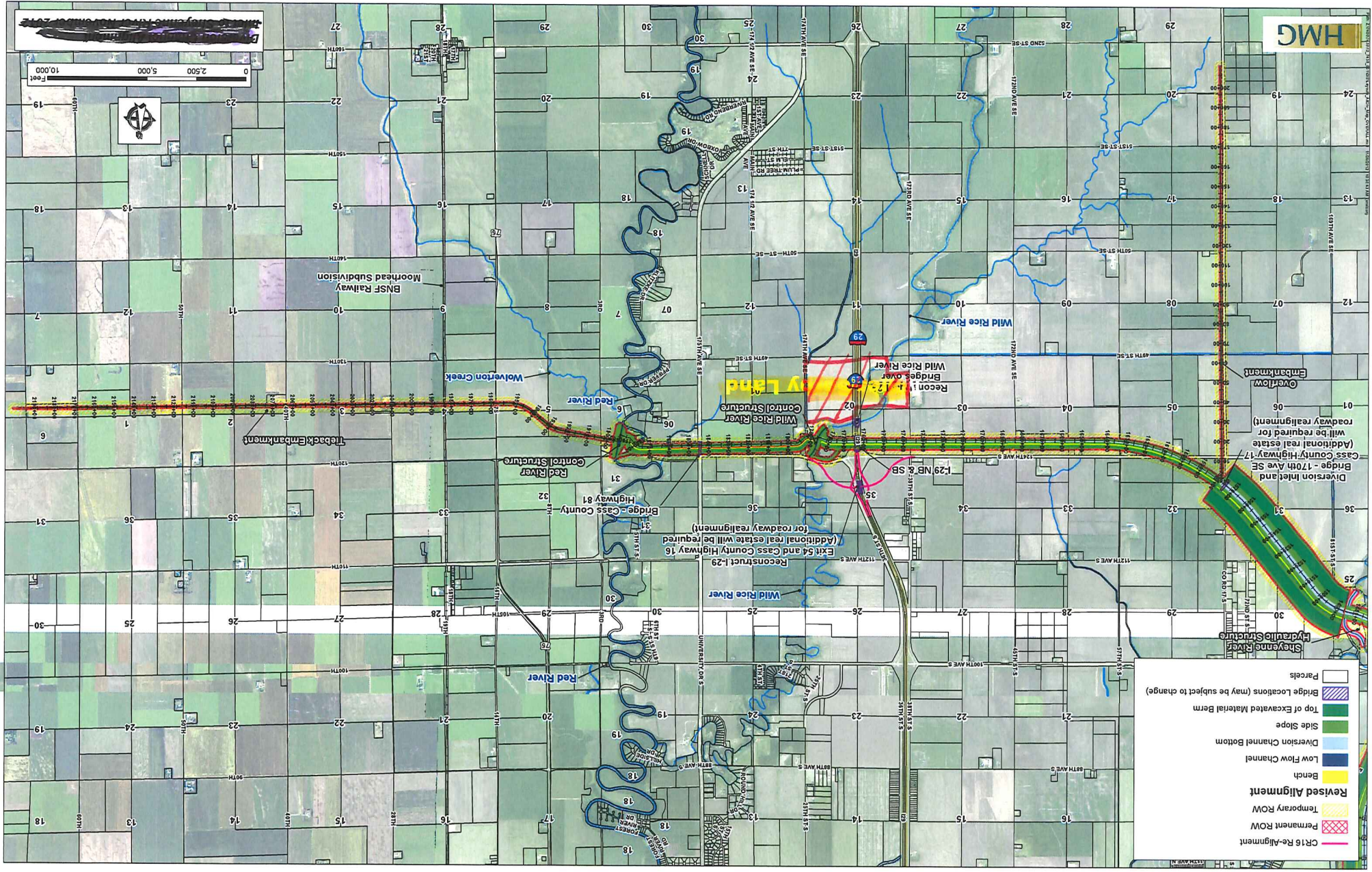
701-241-5720  
Fax 701-297-6020  
[www.casscountynd.gov](http://www.casscountynd.gov)  
[berndtk@casscountynd.gov](mailto:berndtk@casscountynd.gov)

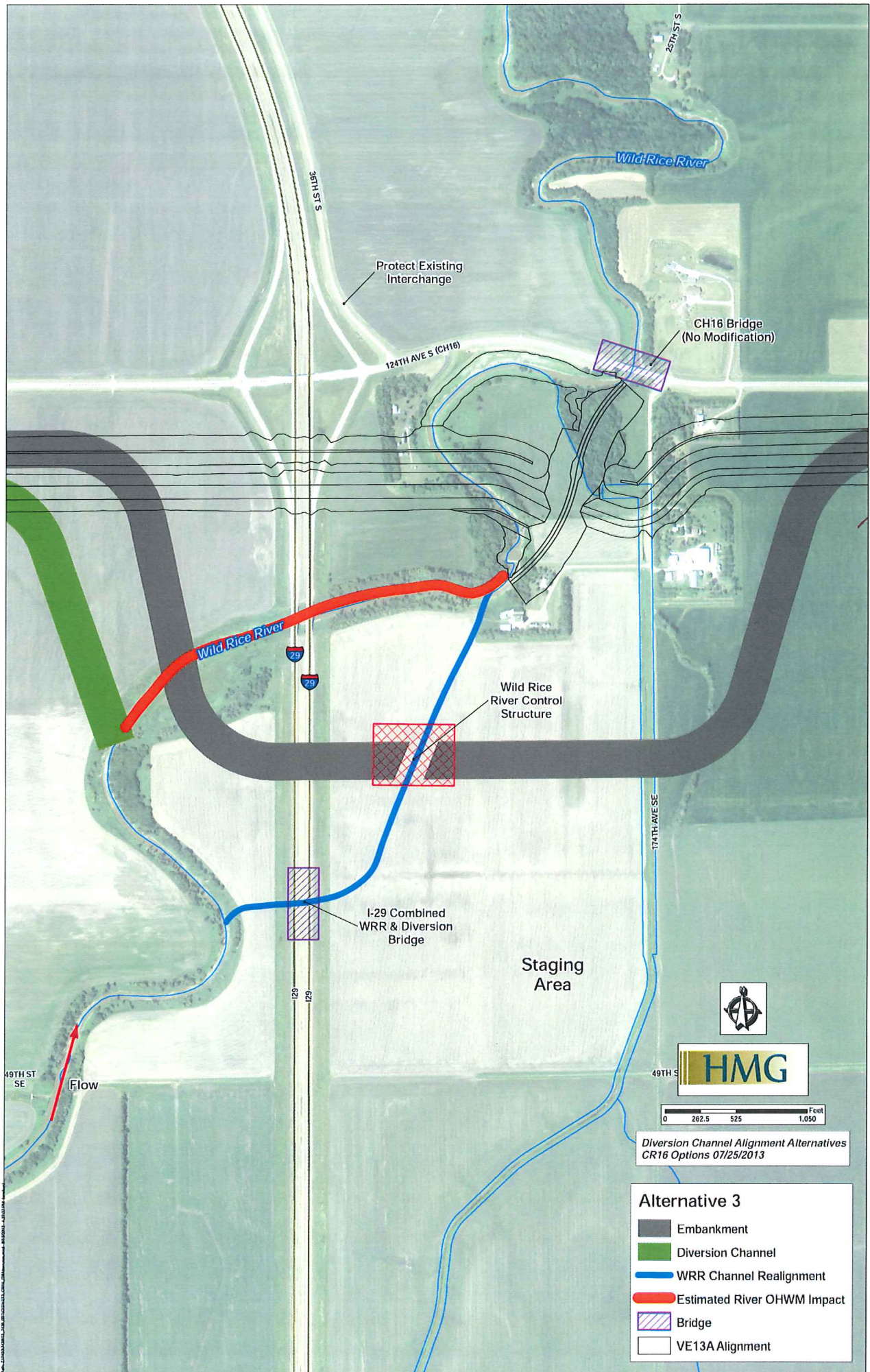
-  CR16 Re-Alignment
-  Permanent ROW
-  Temporary ROW
-  Revised Alignment
-  Bench
-  Low Flow Channel
-  Diversion Channel Bottom
-  Side Slope
-  Top of Excavated Material Berm
-  Bridge Locations (may be subject to change)
-  Parcels



**10,000**  
Foot

0 2,500 5,000



Protect Existing Interchange

124TH AVE S (CH16)

CH16 Bridge (No Modification)

Wild Rice River Control Structure

I-29 Combined WRR & Diversion Bridge

Staging Area



0 262.5 525 1,050 Feet

Diversion Channel Alignment Alternatives CR16 Options 07/25/2013

- Alternative 3**
- Embankment
  - Diversion Channel
  - WRR Channel Realignment
  - Estimated River OHWM Impact
  - Bridge
  - VE13A Alignment

49TH ST SE

Flow

S 15 HUB

174TH AVE SE

I-29

49TH S

Wild Rice River

Wild Rice River

25TH ST S